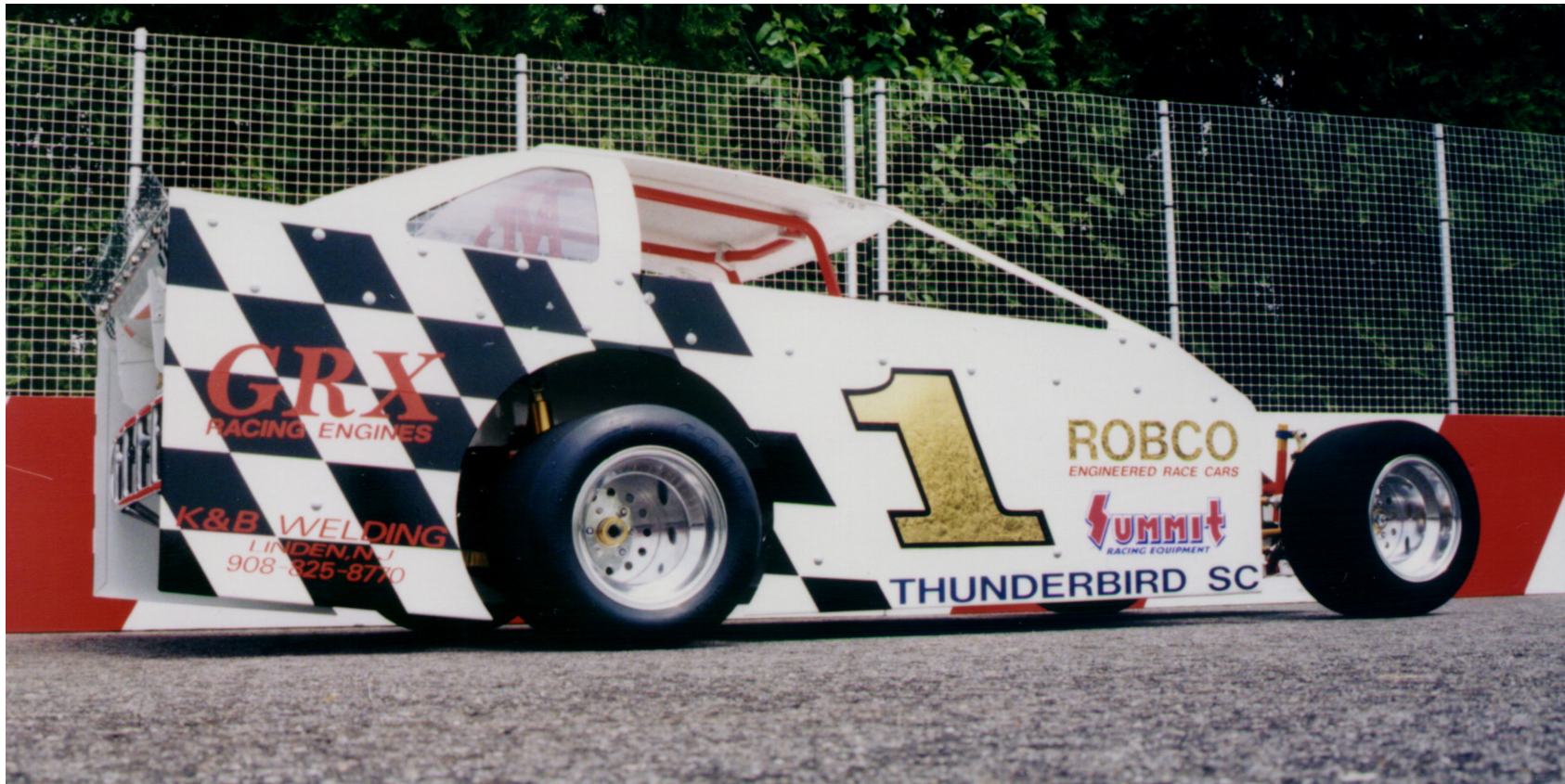


CLOSET WERKS – DIRT MODIFIED QUARTER SCALE



Pictured above is a Quarter scale gas powered radio controlled example styled after a Northeast Dirt Modified Race Car. This car was hand fabricated by a young engineer in the late 80's. The car features a jig welded tubular steel chassis, chain driven steel live rear axel, chromed steel front axel, hand machined aluminum front spindles and hubs, aluminum bodied shock absorbers, fabricated aluminum fuel tank with Nascar style dry-break. Body panels are hand fabbed aluminum sheet retained with quarter turn Dzus buttons. Power comes from a 28cc 2-stroke gas engine. The roof and engine cowlings are hand-laid fiberglass.

CLOSET WERKS – DIRT MODIFIED QUARTER SCALE

Wheelbase: 24 ½"

Weight: 34 lbs

Suspension:

Front – Coil over shocks

Rear – Transverse torsion bar

Drive – Cog belt to jack-shaft to rear chain

Engine – 2HP 2-cycle with SS header

Wheels – WCM spun aluminum

Nerf Bars – Aluminum Rod

